

# 205 Domestic Smoke Alarm

**FRONTIER**  
SAFETY LTD UK





# Feature of 205 Smoke Alarm



- Photoelectric smoke sensing technology
- Provides audio and visual condition indication
- Loud 85 dB sounder to alert occupants
- Test and Hush features in a single button
- Wireless interconnectable smoke alarms configurable into a closed group
- .....
- Up to 10 years operation under normal conditions



# Application Place






The 205 Smoke Alarm is designed for use in a single residential unit, such as a family home or apartment.

**Living room, Dining room, Bedroom, Study etc.**





Model	Description	Picture
205-001	Smoke alarm, 3V, 10-year lithium battery	
205-002	Smoke alarm, 3V, 5-year lithium battery, wireless interconnect	
205-003	Smoke alarm, 3V, user-replaceable 10-year lithium battery	

# Wireless Interconnect Function



**205-002** Interconnect smoke alarms use a wireless transmission path.

Wireless radio interconnection operating frequencies	433 MHz, 868 MHz, 915 MHz
Number of interconnected devices	No limit within signal range
Maximum distance between interconnected devices	500 m



# Group\_ Set up and Join in

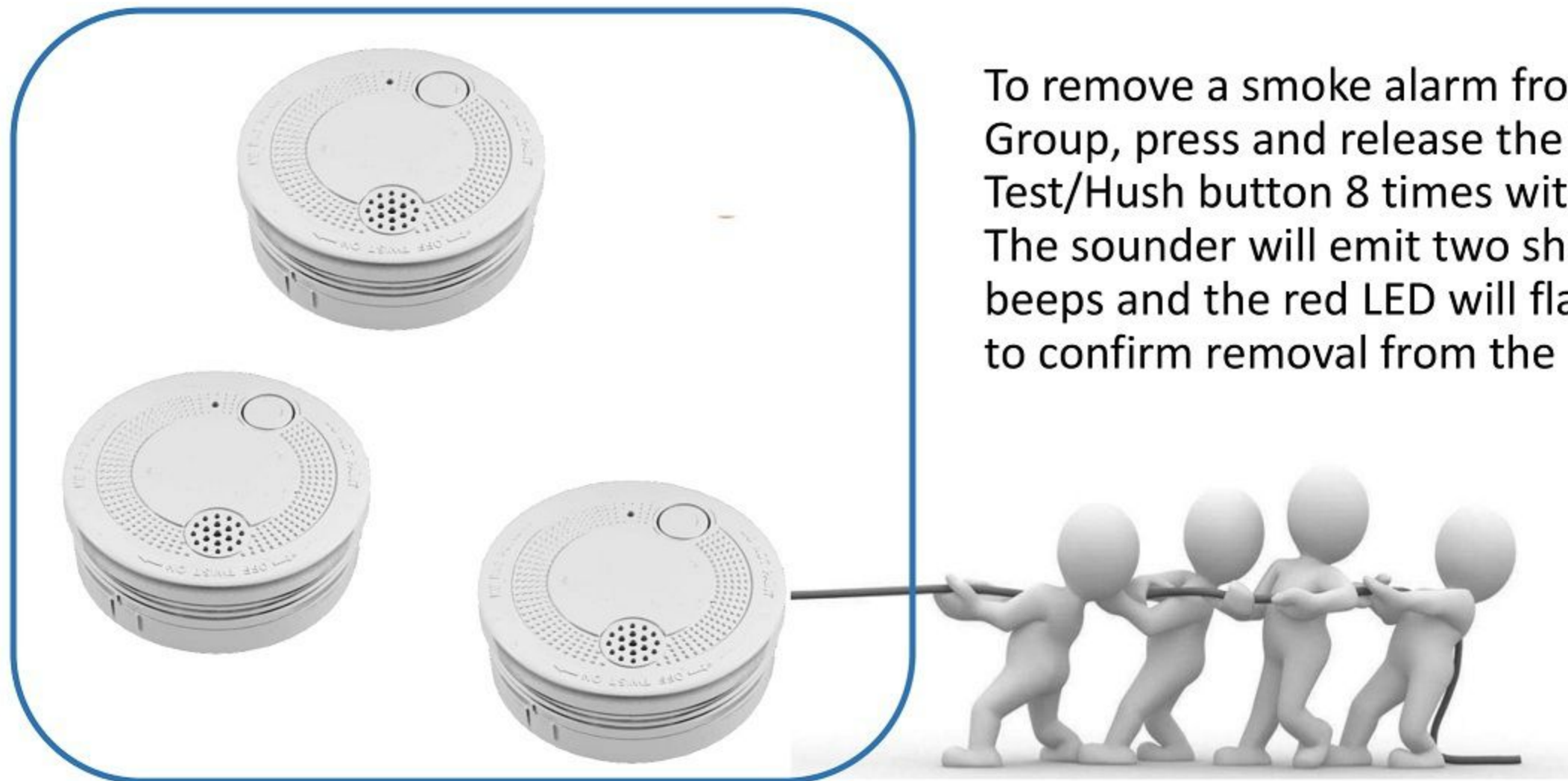


1. Enter group mode by pressing and releasing the Test/Hush button 5 times within 5 s.
2. To add a unit to the group, press and release the Test/Hush button on the second unit twice within 2 s.
3. Repeat Step 2 to add additional units to the Group.

**NOTE:** Group configuration must be completed within 50 s, after which time all units will return to the normal condition.

# Group\_ Remove

To remove a smoke alarm from the Group, press and release the Test/Hush button 8 times within 5 s. The sounder will emit two short beeps and the red LED will flash twice to confirm removal from the Group.





# Hush Function



Hush function temporarily silences unwanted alarms.

When in the Alarm condition, pressing the Test/Hush button reduces the sensitivity of the smoke alarm for 9 min and silences the alarm sounder. The hush feature allows time for the smoke to dissipate.





# More Function



- Low Battery Warning Indication
- Smoke Chamber Fault Indication
- Hush Function Temporarily Silences Fault Indication
- Hush Function Temporarily Silences Low Battery Audible Indication
- Wireless Remote Test and Hush
- .....

